



it's possible!  
**evopro**  
 group



## Process Industry - Control and Instrumentation

### Focus industries

- Food & beverage
- Household chemicals
- Energy
- Water/ waste water
- Oil & gas
- Cement-, mining and metalallurgy

### Process automation projects and services

- Design of system and HW architecture
- Electrical design
- Cabinet design, manufacturing
- Field electrical installation
- Controller design, implementation and commissioning
  - PLC SW programming
  - HMI, SCADA, DCS development
  - Programming intelligent field devices
- Industrial bus and communication systems
- Integration with higher level IT/MIS/MES/ERP systems
- Database programming, custom SW development
- Virtualization, shadow plant system
- On-site commissioning, system integration
- Service and maintenance

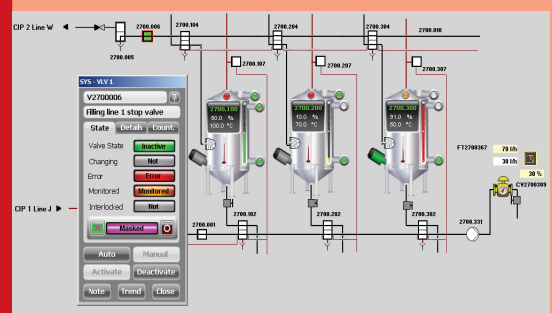
### Design and manufacturing of control panels and switchboards

- PLC, I/O cabinets
- MCC cabinets (withdrawable, demountable, fixed)
- VSD and soft starter enclosures
- Marshaling & termination enclosures
- Boards with custom designs

### Applied technologies and devices

- Automation systems  
 Siemens, Wonderware, Beckhoff, Phoenix Contact, FESTO, SICK, PILZ, Allen Bradley, Mitsubishi, Schneider, Zenon, SMC, Omron
- Drives  
 Siemens, Danfoss, Lenze, SEW, Fanuc, Motoman

### References





## Featured References

### CTC – Tiszaújváros, Hungary

#### Project data

- Customer: Aditya Birla Group (Columbian Tiszai Carbon Kft.), Tiszaújváros, Hungary
- Duration: 2007 – to the present

#### Scope

- Complex DCS migration, upgrade and maintenance
- Installation of DCS cabinets
- DCS integration with boiler control
- Installing new production line with PCS7 v7.0 SP1 DCS
- PLC SW design including normal and safety control with S417-FH PLC
- HMI visualization and communication
- Micromaster 440, Simocode Pro drives
- Power distribution management and monitoring
- Instrumentation
- Production start-up support and continuous planned maintenance

#### Technical data, technologies

- PCS7 (V7.0 SP1 then update to SP3)
- Simatic PDM, Asset Management, PID Tuner
- Simatic S7 F system
- Moore APACS+ DCS
- IEM - Industrial Ethernet Module
- Redundant S7 417-FH CPUs
- Redundant Simatic Rack PCs
- Siemens HART and NAMUR I/O modules
- Siclock TM
- Scalene X optical industrial switches
- Micromaster 440, Simocode Pro
- Eplan21
- 2 OS server pairs (OSS), 2 engineering stations (ES), 8 client PCs (OSC), 1 central archive server (CAS) and 1 Acron7 archive server

### Other references

Concrete Plant, PCS7 process automation  
Customer: Duna-Dráva Cement Kft.

Batch control with PCS7 at Algida Mixer Plant  
Customer: Unilever Magyarország Kft.

Maintenance of PCS7 systems in MIFÜ  
Customer: MVM Hungarian Electricity Plc.

### Nadec – Haradh, KSA

#### Project data

- Contractor: SPX Flow Technology (APV Saudi Arabia)
- Customer: National Agricultural Development Company (NADEC), Haradh, Saudi Arabia
- Duration: 01. 2013 – 08. 2013
- Task: Increasing the capacity of Nadec's laban and juice factory

#### Scope

- Extended the production volume with:
  - new fermentation tanks with filling, emptying and CIP lines
  - new emptying lines to filler machines
  - new yoghurt set line to filler machines
  - new recovery system with recovery points and tanks
  - new CIP line to one CIP plant
- Review and prepare the functional summary according to user specifications
- SW design and development
- HMI visualization
- FAT
- Creation of simulation environment
- Commissioning
- Optimization

#### Technical data, technologies

- Step 7 V5.5
- Simatic WinLC RTX V4.5
- WinCC flexible 2008
- Simatic PDM V6.0
- Simatic ProSave V7.4
- Wonderware Intouch 10.6
- VMWare vSphere
- ArchestrA IDE 3.6
- System Management Console 0027

